

Le Grand Cruvinet®



WINE PRESERVING AND DISPENSING SYSTEMS

Features:

- ✦ Separate temperature controls for white and red wine compartments
- ✦ Movable dividers for flexibility in the number of white and red wines offered
- ✦ Automatic, self-defrosting and evaporation
- ✦ Convenient thermopane glass sliding doors
- ✦ Remote reading thermometer and thermostat, panel mounted
- ✦ Cooling indicators and "open door" warning lights
- ✦ Gauges and controls front mounted for easy reading and setting
- ✦ Adjustable pressure gauge
- ✦ Adjustable stainless steel siphon tubes
- ✦ Interior lights
- ✦ Standard cabinets handmade of solid brass, stainless steel, solid oak, walnut mahogany (see price list for finish and model identification)
- ✦ Custom cabinets to match any decor and design also available

NOTE: Please allow 3" space on left and right, sides and back and allow 12" space on top.

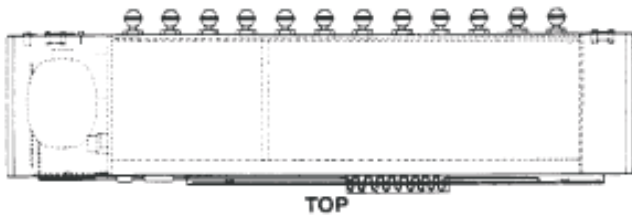
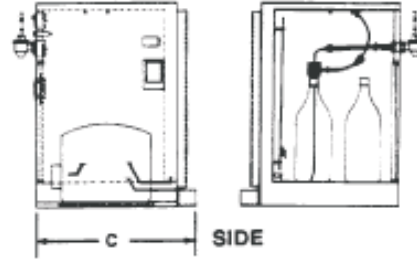
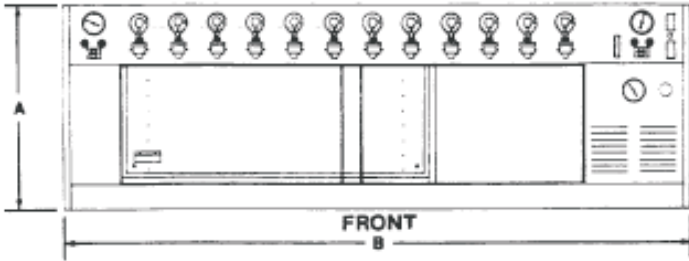
CRUVINET WINEBAR CO., LLC
P. O. Box 10304 • Reno, NV 89510-0304
Phone: (775) 827-4044 • FAX (775) 827-0432
www.CruvinetSys.com • e-mail: info@CruvinetSys.com



Le Grand Cruvinet®

Fresh wine by the glass... wine preserving and dispensing systems

Specifications



MODEL#	GCR-6	GCR-8	GCR-12	GCR-16	GCR-24
A-Height*	22.5"	22.5"	22.5"	22.5"	22.5"
B-Length*	41"	48.5"	63.5"	78.5"	102"
C-Depth*	18"	18"	18"	18"	18"
Weight	180 lbs	200 lbs	265 lbs	315 lbs	350 lbs
High Temp Compressor					
Horsepower	1/8	1/8	1/6	1/6	1/6
Rated (amps)	2.6	2.6	3.4	3.4	3.8

*Add 1" to Height, Length and Depth for Wood Cabinets.
Custom dimensions available

- Electrical: 110 Volt AC, 2.8 Amps 60 Hz
- Interior Lights: 24 Volt AC strip lights
- Power Source: 24 Volt AC Transformer
- Plumbing: Optional drain available
- Doors: Sliding 1/2" thermopane glass
- Insulation: Polyurethane foam
- Refrigerant: MP 39
- Evaporator: Static Plate
- Temp Control: Adjustable thermostat
- Condenser: Static Plate
- Defrosting: Semi-automatic

- Gas: Nitrogen Food Grade or better, via 1/4" I.D. x 1/2" O.D. fiber reinforced H.P. hose to remote tank.
- Pressure: 1.4 to 1.6 PSI
- Testing: Tested to NSF/ANSI Standard 18 and UL 471 for stainless steel by Intertek. (wood not included)
- Options: Special deco colors, matching and custom wood finishes. rounded radius ends, security locking devices and stainless steel faucets for dishwasher proof washing and virtual indestructibility.

CRUVINET WINEBAR CO., LLC
P. O. Box 10304 • Reno, NV 89510-0304
Phone: (775) 827-4044 • FAX (775) 827-0432
www.CruvinetSys.com • e-mail: info@CruvinetSys.com

